

Delaware Court, Drakewalls, PL18

Guide Price £250,000

3 1 1

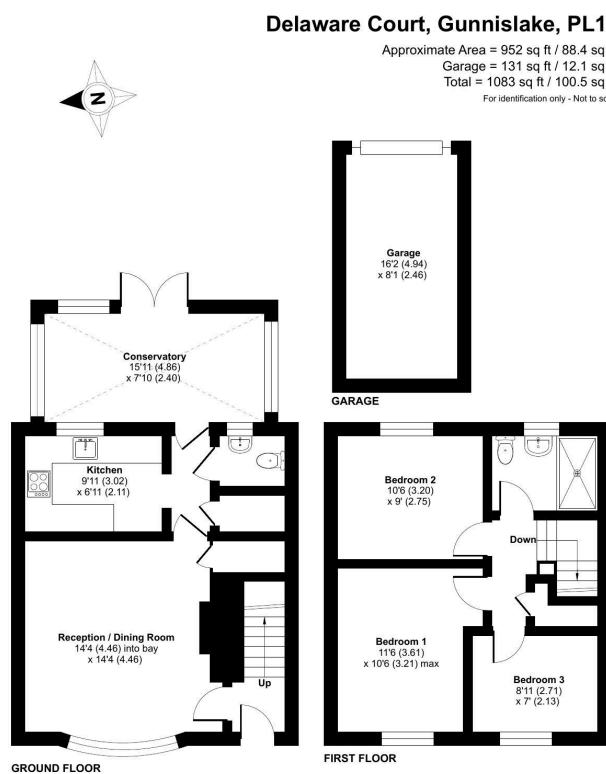


A wonderful opportunity to purchase a three-bedroom terraced home within an exclusive courtyard development. The property benefits from an allocated parking space, single garage and no onward chain.

Situated within the village of Drakewalls and approximately 4.7 miles away from Callington and 5.6 miles from Tavistock. Amenities within the area include a convenience store with a petrol station, primary schools, pubs and a train station with regular trains to and from Plymouth.

Key Features

- TO ARRANGE A VIEWING PLEASE QUOTE BL0650
- No Onward Chain
- Garage
- Modern Shower Room & Downstairs W/C
- Low-Maintenance Garden
- Three Bedrooms
- Front & Rear Gardens
- Allocated Parking Space
- Exclusive Courtyard Development
- Freehold



Floor plan produced in accordance with RICS Property Measurement Standards incorporating International Property Measurement Standards (IPMS2 Residential). © richcom 2024. Produced for Ben Estates TA Ben Langton Powered By exp. REF: 1168890